

INSTALLATION INSTRUCTIONS

VENEZIA URINAL - 6 STAR

Code: JURV100

JohnsonSuisse
Bathroom Solutions

DESCRIPTION

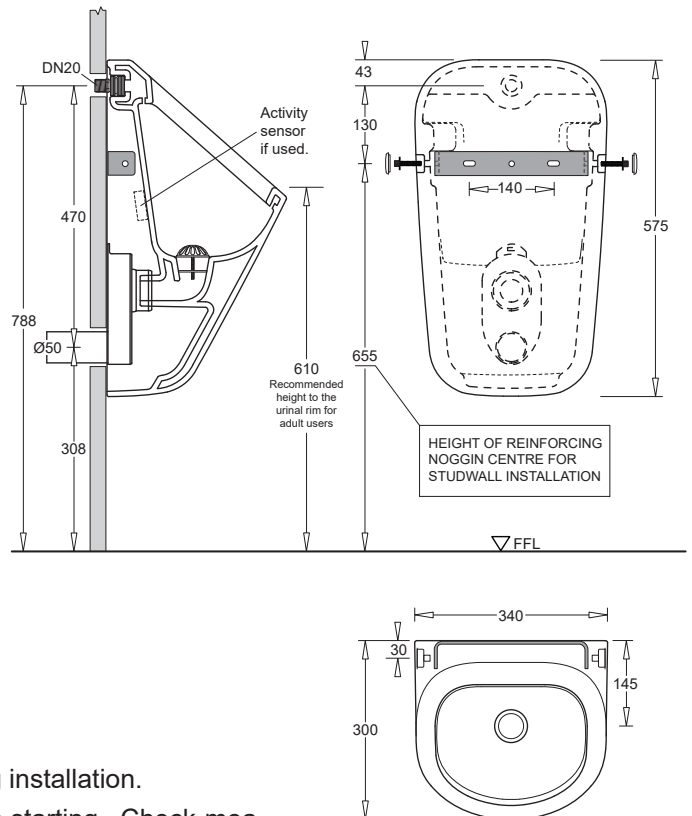
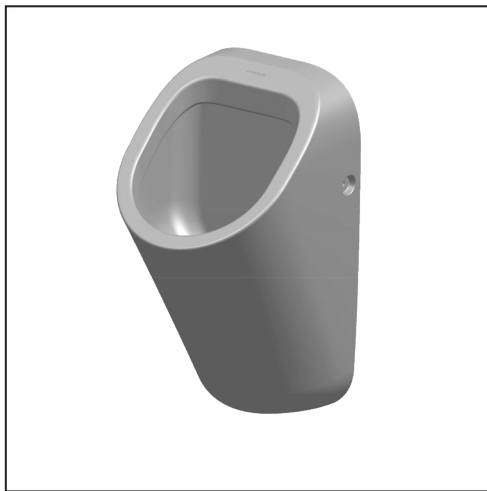
The Venezia Urinal is a vitreous china wall hung urinal with back water entry and a waste trap that is concealed within the unit.

The urinal is 6 Star WELS rated and designed to be used with a sensor activated, timed solenoid system.

The product is compatible with the Johnson Suisse Sentinel Electronic Flushing System (JURS400.401 - see separate instructions for the electronic component installation).

An Easi-fix wall mounting bracket and installation template is supplied.

A top-locking stainless steel waste dome is included.



INSTALLATION STEPS

1. Inspect urinal for any transit damage before commencing installation.
2. Check site roughing in and installation dimensions before starting. Check-measure the water inlet/waste outlet and bracket locations to confirm installation fit.
3. The 19mm water inlet sparge pipe must protrude ± 40 mm from the finished wall surface. Flushing device must comply with AS1172.2. Affix the bracket plate to the wall using the plugs and screws provided. Ensure the line of screw holes is 135mm below the water inlet hole centre. Use the bracket as a template for ease of locating the fixing points.
4. The waste is fitted to 50mm DWV PVC pipework
5. Affix the plastic waste trap to the wall in the correct location.
6. Mount the urinal on the bracket making sure that the water inlet and waste outlet seal correctly (lubricant may be used).
7. Fix the securing bolts to the bracket through the urinal side holes and tighten using an allen key. Fit the white cover caps.
8. Test flush to check operation and for leaks (Note: water supply piping should be flushed prior to operation testing).
9. Silicone sealant may be applied to dress and seal the contact between the urinal and the wall.

All installations must be carried out by a licensed plumber in compliance with the Plumbing Code of Australia and any State or LGA Regulations

All dimensions are in millimetres and are subject to normal manufacturing variation of ± 5 mm on all surfaces. As product development is ongoing BPA reserves the right to vary specifications without notice.

Bathroom Products Australia Pty. Ltd. ABN 87 079 297 617

See www.johnsonsuiss.com.au for warranty terms and conditions

Bathroom Products Australia P/L
2/97 Banksia St

Botany, NSW 2019

TEL: 1300 717 717 FAX: 1300 746 480

www.johnsonsuiss.com.au